

NW COR SEC 21
T18N, R64W

P-10"

062624

RECEIVED
LARAMIE COUNTY
CHEYENNE, WY.

CERTIFIED LAND CORNER RECORDATION

OCT 5 PM 3 00

DESCRIPTION OF CORNER EVIDENCE FOUND, AND ORIGINAL RECORD (If known)

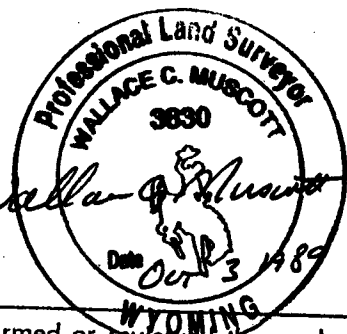
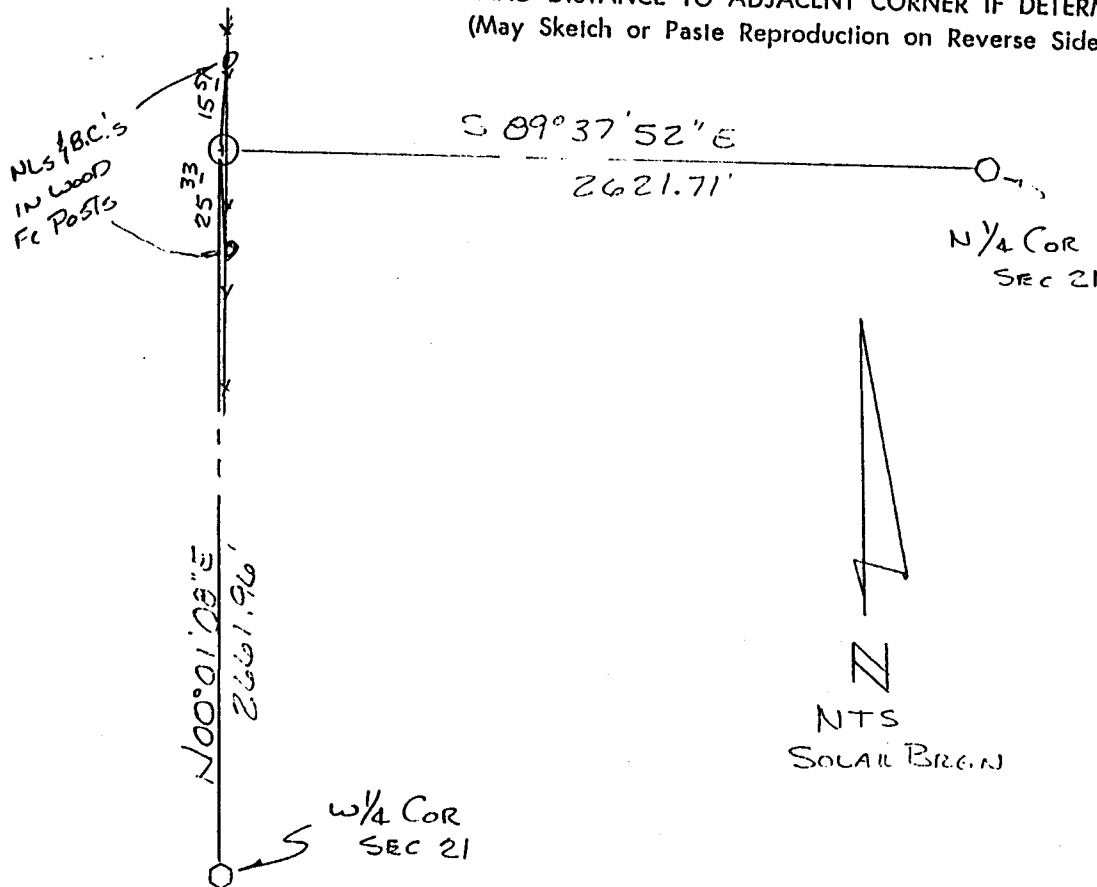
FOUND ORIGINAL STONE, SLIGHTLY LAID OVER TO THE WEST
w/ \equiv chisel marks on south side & \equiv chisel marks on east face. UNDER
A NORTH SOUTH FENCE LINE. FOUND 16X10X5 GRANITE. ORIGINAL BLM
CALL: 16X10X5 GRANITE.

DESCRIPTION OF MONUMENT AND ACCESSORIES ESTABLISHED
TO PERPETUATE THE ORIGINAL LOCATION OF THIS CORNER:

IN PLACE OF ORIGINAL STONE, SET A $\frac{5}{8}$ " X 30" REBAR w/ CORPS
OF ENGINEERS BRASS CAP ON TOP. PLACED ORIGINAL STONE ALONG
EAST SIDE & REFERENCED AS SHOWN BELOW.

AUG 1 1989

SKETCH, WITH COURSE AND DISTANCE TO ADJACENT CORNER IF DETERMINED IN THIS SURVEY.
(May Sketch or Paste Reproduction on Reverse Side.)



I, Wallace C. Muscott certify that I have carefully performed or reviewed the work done on the diagrammed corner as reported on this recordation form and approve the same.

Wallace C. Muscott 3830
Signature of Surveyor Registration No.

STATE OF WYOMING,
Office of Clerk and Recorder,
County of _____

This "corner record" was filed for record on the _____ day of _____, 19____, was noted on the cross-index plat and is assigned page No. _____, in book No. _____.

County Official			
Cross Index No. <u>N-9</u>	T. <u>18N</u>	R. <u>64W</u>	Mer.
_____	T. _____	R. _____	Mer.
_____	T. _____	R. _____	Mer.
_____	T. _____	R. _____	Mer.
_____	T. _____	R. _____	Mer.
_____	T. _____	R. _____	Mer.
_____	T. _____	R. _____	Mer.